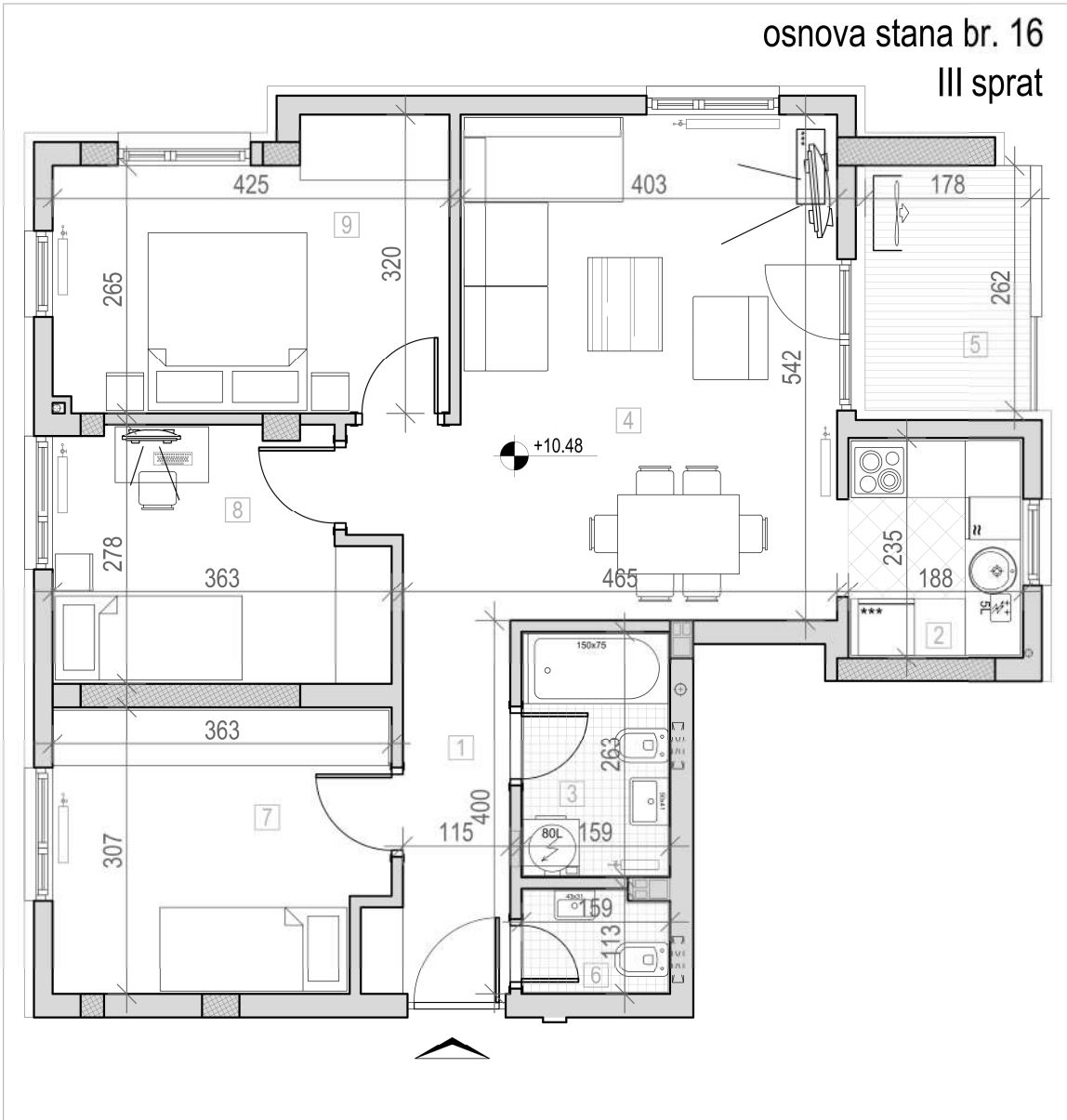


osnova stana br. 16
III sprat



STAMBENA ZGRADA
Po+P+4+Pk
Novi Sad, Ul. Gundulićeva 31
K.P. 8691/1, K.O. Novi Sad I

| III SPRAT | | |
|-------------|---------------|----------------------------|
| STAN BR. 16 | | |
| br. | prostorija | površina/m ² |
| 1 | ULAZ | 5,00 |
| 2 | KUHINJA | 4,42 |
| 3 | KUPATILO | 4,18 |
| 4 | DN. SOBA | 23,88 |
| 5 | LODA | 4,98 |
| 6 | WC | 1,74 |
| 7 | SP. SOBA | 10,67 |
| 8 | SP. SOBA | 9,15 |
| 9 | SP. SOBA | 12,10 |
| | UKUPNO | 76.12 m² |

